

GANTERUD L20-3 Pro

Proven and robust technology with a new application

Radio-controlled precision levelling.
Maximises efficiency, reduces
assembly time and
increases safety.



GANTERUD L20-3 Pro



Levelling both light and heavy objects

L20-3 Pro is a lifting yoke that uses new and proven technology to level loads efficiently and safely at high levels of precision. The lifting yoke can handle both light and heavy objects ranging from 0 kg up to 20 tonnes.

Turning heavier objects 90 degrees

Here, the L20-3 Pro can be used as a snatch block. The chain wheel can be disengaged via remote control for a free-running chain that operates the same as a snatch block. Longer chain packages can be ordered as an option.

Accurate and wide-ranging levelling

The L20-3 Pro has a reversible length of up to 3 metres per hook and can be precision levelled at two speeds.

Increases the productivity rate many times over

At the touch of a button, the L20-3 Pro can easily and safely level its objects. Expensive crane times and waiting times are reduced.

Robust and strong

A robust and proven technology, as well as a reliable electric drive ensures that the L20-3 Pro can operate in all weather, from -20 to 40 degrees Celsius, in the most demanding environments.

Sturdy, durable and reliable

The sturdy casing, along with the IP65 rated electrical system, makes the L20-3 Pro easy to clean.

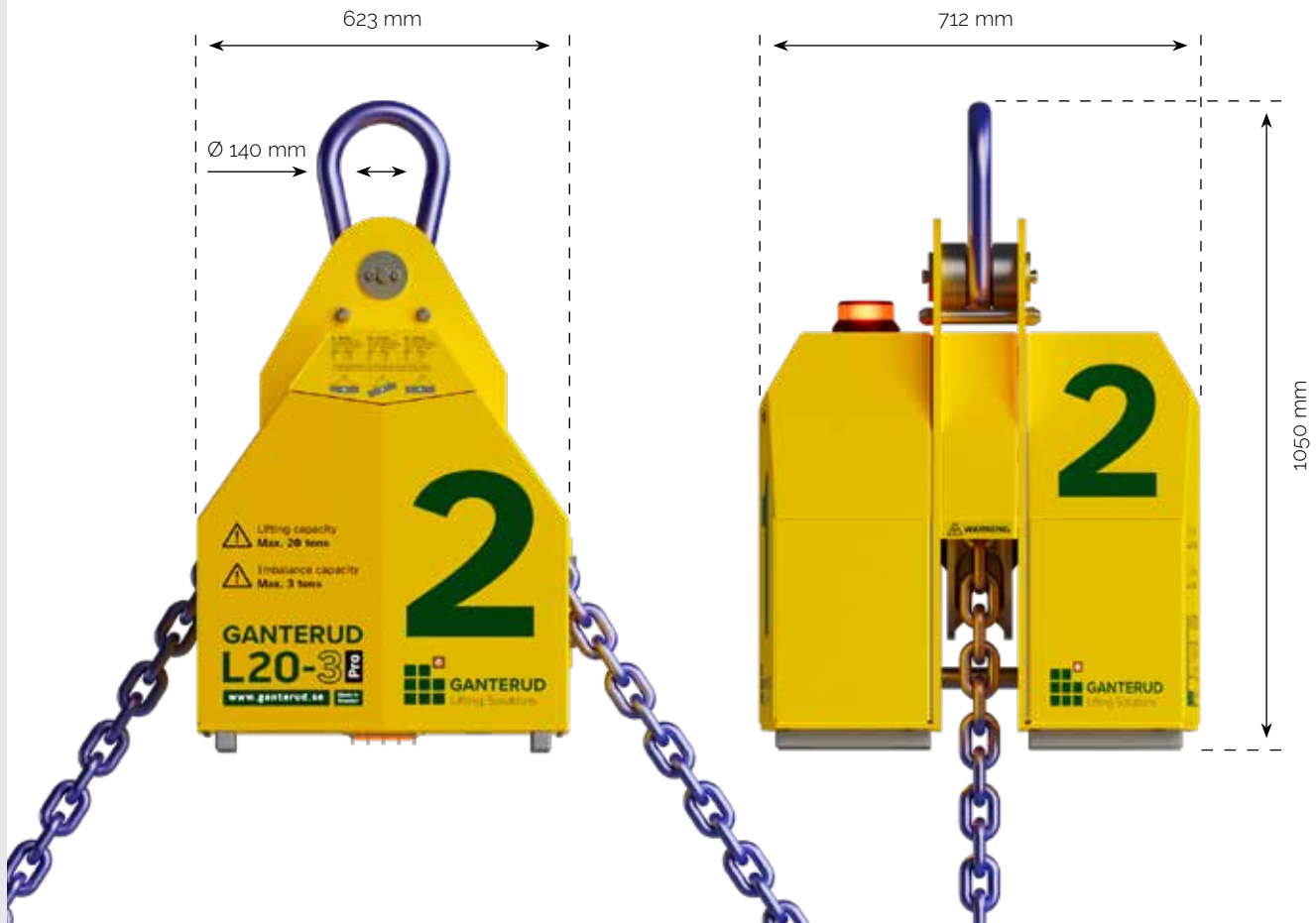
Radio control

With a user-friendly and IP67-rated remote control, the L20-3 Pro always operates smoothly.

Minimal Service

All you need to think about, apart from cleaning it, is charging the battery. Battery status is indicated on the yoke and, for normal use, one charge per week is sufficient.





Technical data

Lifting capacity:	Max. 20 tonnes
Leveling capacity:	Max. 3 tonnes
Max. levelling length:	6 m (3 m in both directions)
	Two levelling speeds
Max. chain angle:	60 degrees at a load of 20 tonnes
Total chain length:	6 m
Chain dimensions:	60.5x20 mm calibrated chain gr.80 RS
Net weight:	395 kg (Incl. chain and hooks)
Height:	1050 mm
Width:	712 mm
Depth:	623 mm

Control system

Radio range:	100 m line of sight
Electric motor voltage:	24 VDC
Power in standby:	50 mA
Power max. continuous:	60 A
Power peak:	100 A

Certification

CE marked product

Environment requirements

Operating temperature:	-20°C – +40°C
Storage temperature:	-30°C – +70°C
Relative humidity, RF:	0–90% when stored

Optional accessories

- Protective cover
- Chain kit in other lengths
- Extra batteries
- Transport packaging

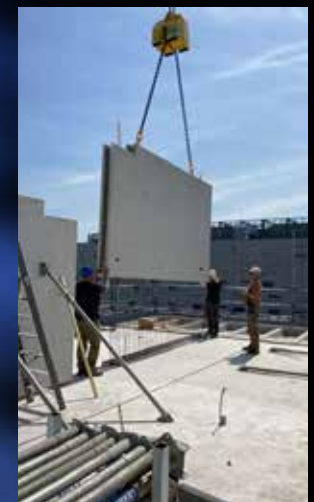
We reserve the right to change specifications or construction without prior notice, and reserve ourselves for any printed errors. Variations in specifications and equipment standards may occur between different geographic markets. For more information on current product specifications and local adaptations, please contact us.



Ganterud Lifting Solutions AB
www.ganterud.se



Ganterud Lifting Solutions is a product company that develops and delivers efficient, reliable and innovative lifting systems to facilitate material handling and to increase profitability, primarily in the construction and engineering sector.



Reseller: **STEXON GmbH**
www.stexon.eu
 +49 176 83 33 27 14
office@stexon.de

Fixpod GmbH
www.fixpod.ch
 +41 76 295 19 99
info@fixpod.ch



Ganterud Lifting Solutions AB
 Frögatan 10
 SE 653 43 Karlstad
 Sweden
www.ganterud.se